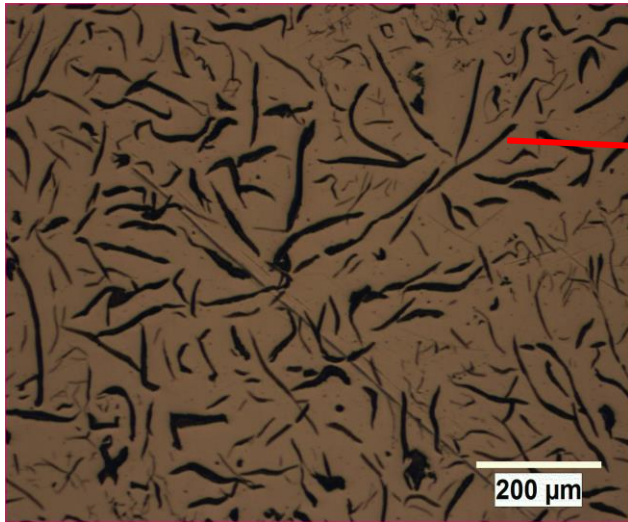


Hypoeutectic Gray Cast Iron (as polished)



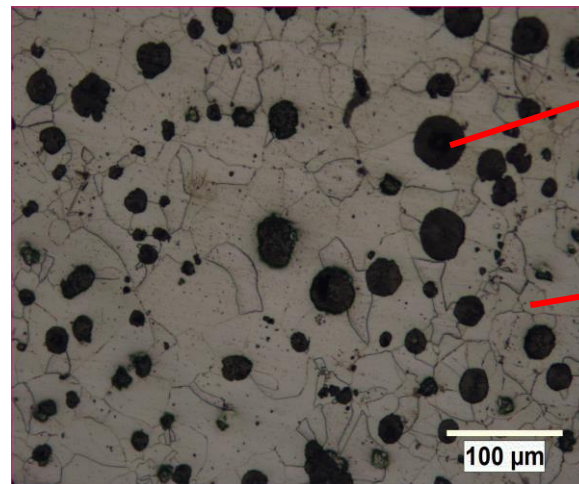
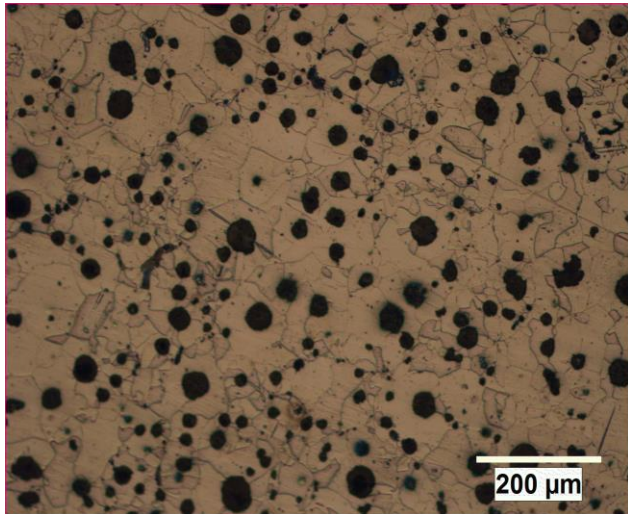
Graphite flake

Hypereutectic Gray Cast Iron (as polished)



Kish Graphite

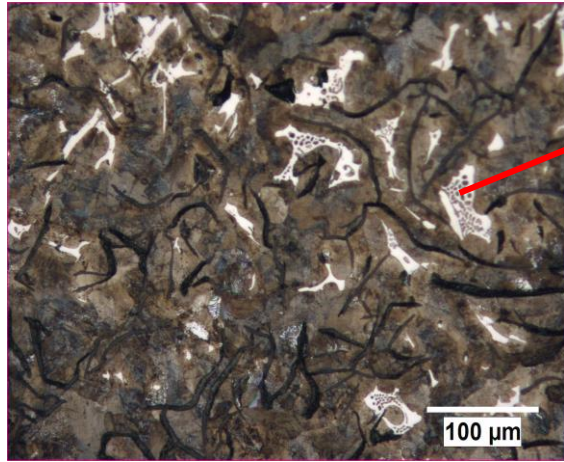
Ferritic Nodular Cast Iron



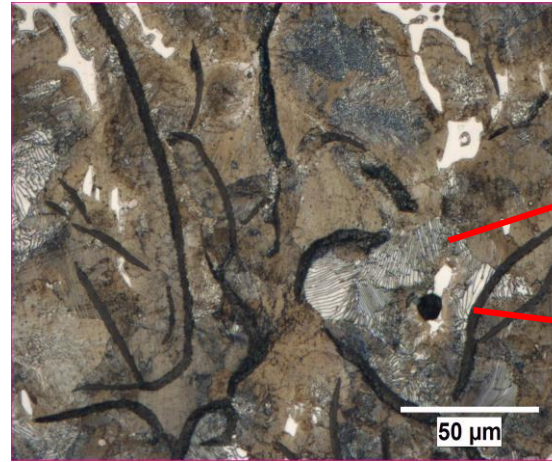
Graphite Nodule

Ferritic (α) matrix

Pearlitic Hypoeutectic Gray Cast Iron (with steadite)



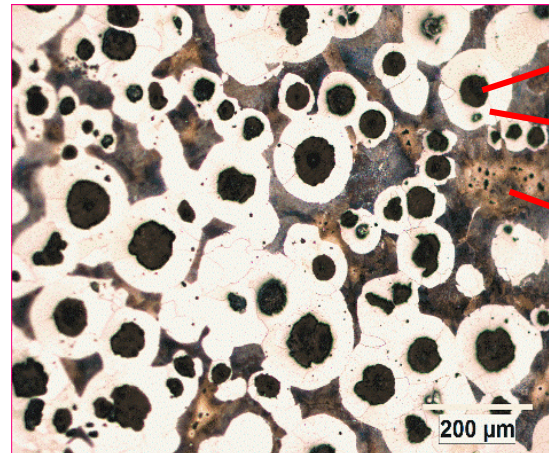
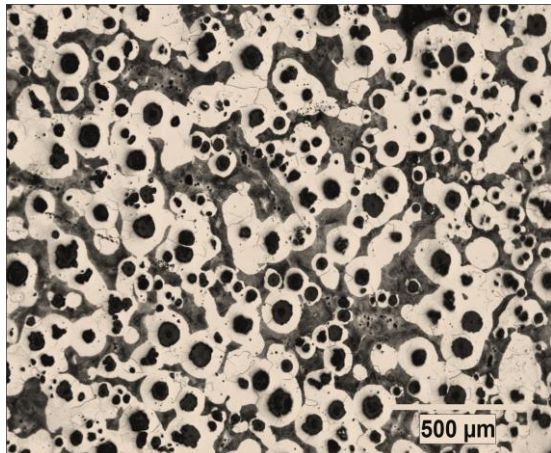
Steadite (ferrite+Fe₃P)



Pearlitic (α+Fe₃C) matrix

Graphite Flakes

Bulls Eye Structure

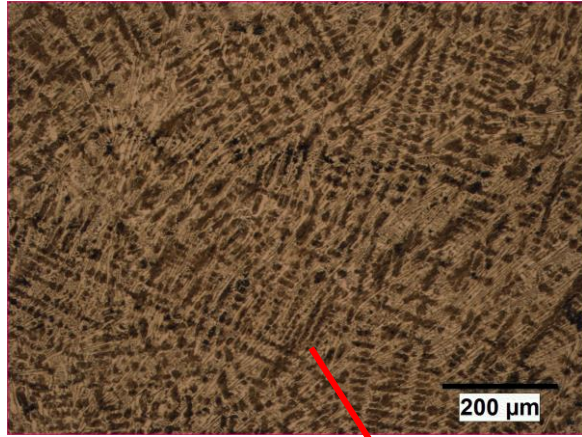


Graphite Nodule

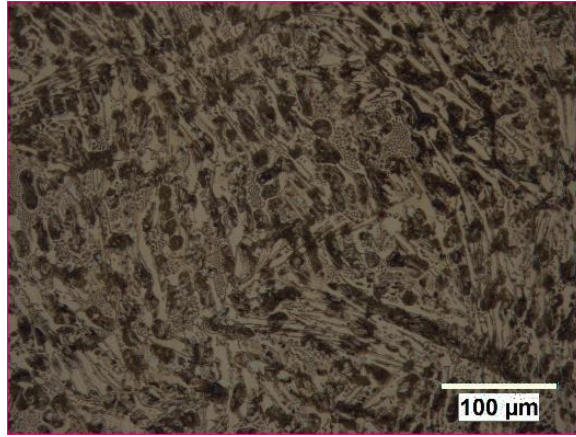
Ferrite (α)

Pearlite (α+Fe₃C) matrix

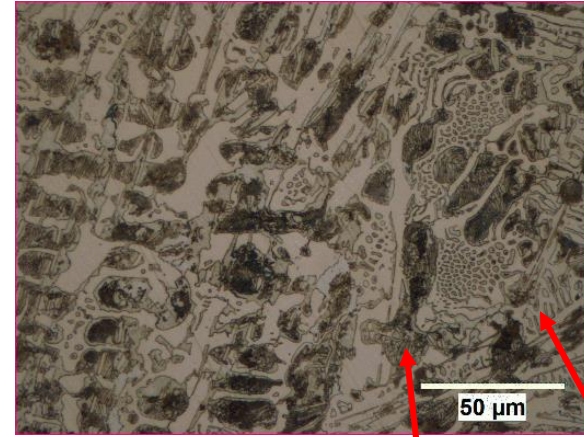
Hypoeutectic White Cast Iron



Primary γ island (transformed to pearlite)



Primary Fe_3C



Ledeburite (transformed γ island + Fe_3C matrix)

